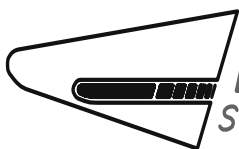


# QUADGUARD<sup>®</sup> HIGH SPEED (70 mph [113 km/h])



**ENERGY ABSORPTION  
SYSTEMS, INC.**

## SCT02d

SHEET NO.

DATE:

1 of 2

4/13/05

## INTENDED USE

The QuadGuard<sup>®</sup> HS System consists of energy absorbing cartridges surrounded by a framework of steel Quad-beam<sup>™</sup> guardrail which can telescope rearward during head-on impacts. The QuadGuard<sup>®</sup> HS System has a center monorail which will resist lateral movement during side angle impacts and a backup which will resist movement during head-on impacts. The nose consists of a flexible plastic nose belt. Transitions are available and may be required depending on site conditions.

For temporary installations - the System may be installed on 6" [152mm] minimum thick asphalt when anchored with 18" [457mm] threaded rods and MP-3. Most of the QuadGuard<sup>®</sup> HS is reusable. After a typical design speed, head-on hit, the majority of the System is reusable. The System usually needs only to be pulled back into place and have the cartridges and light weight diaphragms replaced. Design speed impacts typically result in minimal damage to most of the structural hardware.

The QuadGuard<sup>®</sup> HS System has successfully passed the National Cooperative Highway Research Program (NCHRP) Report 350, 1993, Test Level 3 for redirective, non-gating terminals and crash cushions with both the light car and pickup truck at speeds up to 70 mph [113 km/h] at angles up to 20°. It is the only crash cushion to be completely tested using NCHRP 350 criteria at 70 mph [113 km/h].

• Non-gating	Length =	(Nominal) 29'-6" [9 m]
• Redirecting		
• Non-pocketing	Width =	(standard) 24" [610 mm] Min
• Bidirectional or		(standard) 36" [916 mm] Max
Unidirectional	Design Speed =	variable up to 75 mph [120 km/h]
• Partially Reusable		

### Contact Information

**Corporate Offices:**  
35 East Wacker Dr., 11th Floor  
Chicago, IL 60601-2076  
Telephone: (312) 467-6750  
FAX: (312) 467-1356  
<http://www.energyabsorption.com/>

## QUADGUARD<sup>®</sup> HIGH SPEED SYSTEM (70mph [113 km/h])

# *SCT02d*

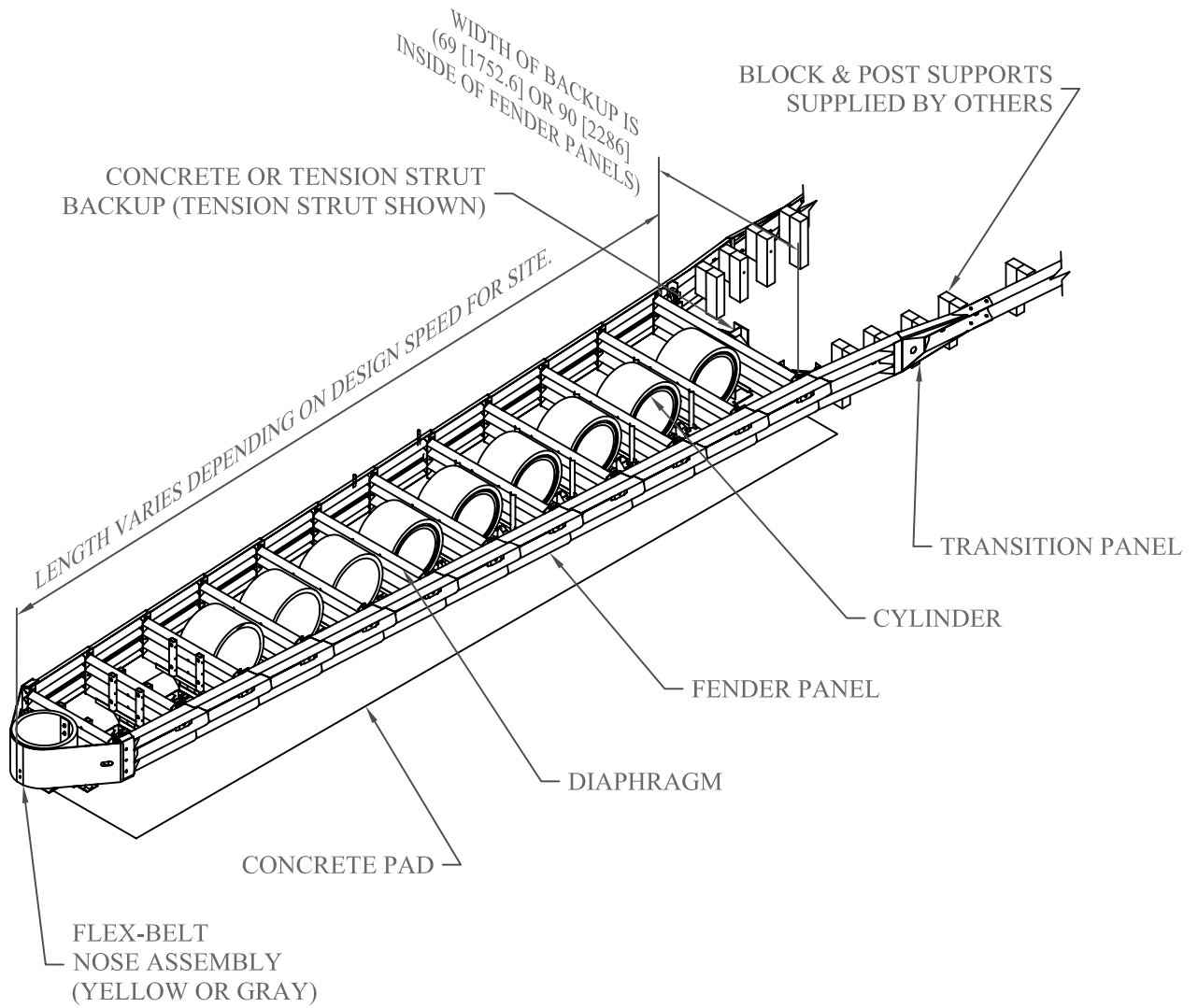
SHEET NO.

DATE

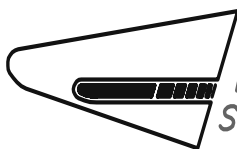
2 of 2

4/15/05





# QUADGUARD<sup>®</sup> ELITE SYSTEM



**ENERGY ABSORPTION  
SYSTEMS, INC.**

## SCT02e

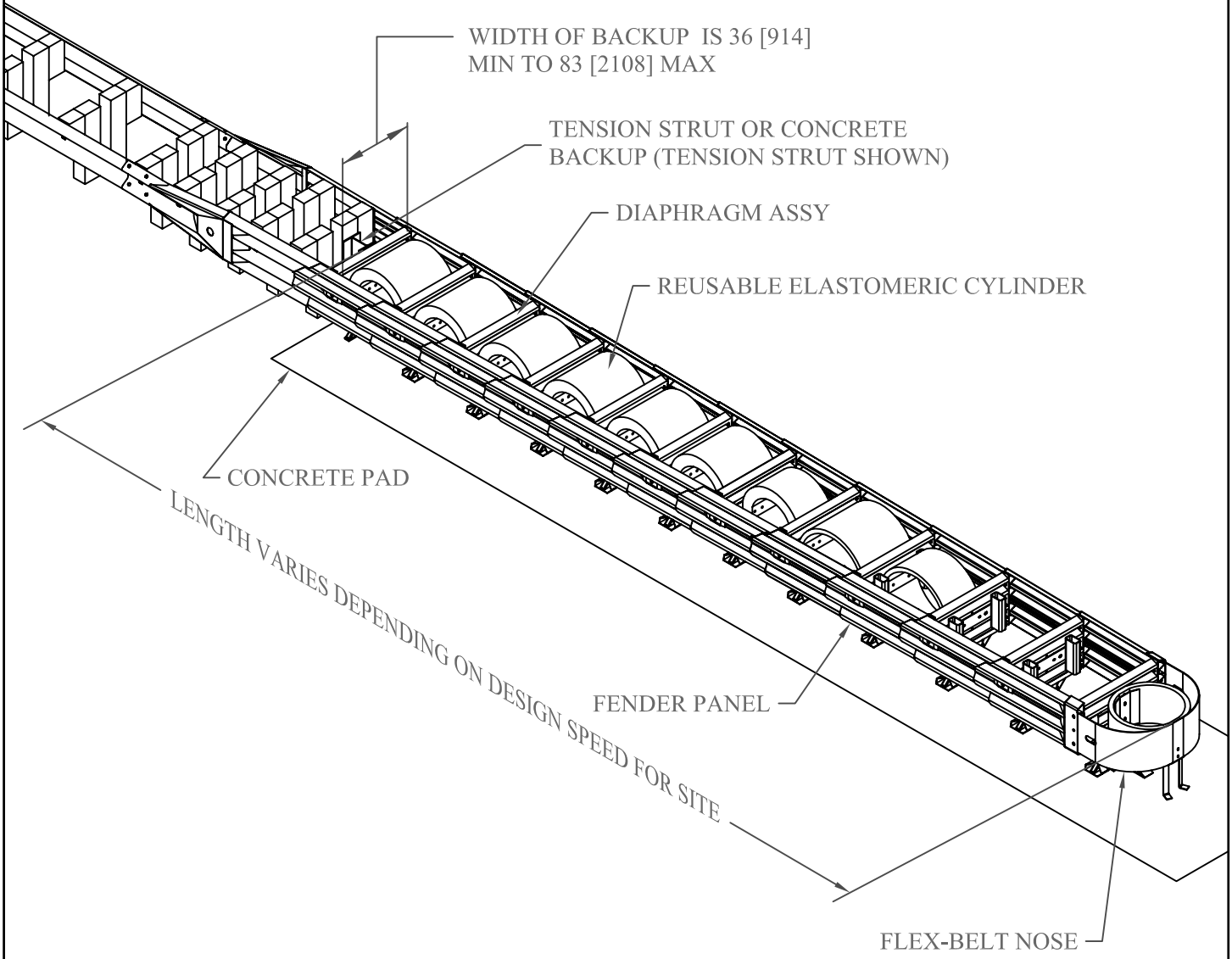
SHEET NO.

DATE:

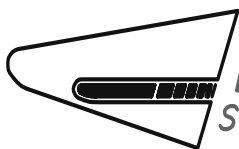
1 of 2

4/19/05





# QUADGUARD<sup>®</sup> LMC SYSTEM



**ENERGY ABSORPTION  
SYSTEMS, INC.**

## SCT02f

SHEET NO.

DATE:

1 of 2

4/20/05

